

Flute

Twelve Major Scales

Concert B \flat Scale



Concert E \flat Scale



Concert A \flat Scale



Concert D \flat Scale



Concert F Scale



Concert C Scale



Concert G Scale



Concert D Scale



Concert A Scale



Concert E Scale



Concert B Scale



Concert G \flat Scale



Oboe

Twelve Major Scales

Concert B \flat Scale



Concert E \flat Scale



Concert A \flat Scale



Concert D \flat Scale



Concert F Scale



Concert C Scale



Concert G Scale



Concert D Scale



Concert A Scale



Concert E Scale



Concert E Scale



Concert G \flat Scale



Clarinet
Bass Clarinet

Twelve Major Scales

Concert B \flat (C) Scale

Musical notation for the Concert B \flat (C) Scale. The scale is written on a treble clef staff. The notes are C, D, E, F, G, A, B, C. Fingerings are indicated as L R for the first two notes and R L for the last two notes. The scale is played in a single breath.

Concert E \flat (F) Scale

Musical notation for the Concert E \flat (F) Scale. The scale is written on a treble clef staff. The notes are F, G, A, B, C, D, E, F. Fingerings are indicated as R for the first and last notes. Key signatures are marked as + E \flat key and - E \flat key.

Concert A \flat (B \flat) Scale

Musical notation for the Concert A \flat (B \flat) Scale. The scale is written on a treble clef staff. The notes are B \flat , C, D, E, F, G, A, B \flat . The scale is played in a single breath.

Concert D \flat (E \flat) Scale

Musical notation for the Concert D \flat (E \flat) Scale. The scale is written on a treble clef staff. The notes are E \flat , F, G, A, B, C, D, E \flat . Key signatures are marked as + E \flat key and - E \flat key.

Concert F (G) Scale

Musical notation for the Concert F (G) Scale. The scale is written on a treble clef staff. The notes are G, A, B, C, D, E, F, G. Fingerings are indicated as 5, 1, L R, 5, S, 5, R L, 1, 5. Key signatures are marked as + E \flat key and - E \flat key.

Concert C (D) Scale

Musical notation for the Concert C (D) Scale. The scale is written on a treble clef staff. The notes are D, E, F, G, A, B, C, D. Fingerings are indicated as 1, L R, 5, 5, R L. Key signature is marked as + E \flat key.

Concert G (A) Scale

Musical notation for the Concert G (A) Scale. The scale is written on a treble clef staff. The notes are A, B, C, D, E, F, G, A. Fingerings are indicated as 5, 1, L R, 5, 5, R L, 1, 5.

Concert D (E) Scale

Musical notation for the Concert D (E) Scale. The scale is written on a treble clef staff. The notes are E, F, G, A, B, C, D, E. Fingerings are indicated as R L R, 5, S, 1, R L R, 5, R L, R, 1, 5, R L R. Key signatures are marked as + E \flat key and - E \flat key. A note is marked as use chromatic fingering.

Concert A (B) Scale

Musical notation for the Concert A (B) Scale. The scale is written on a treble clef staff. The notes are B, C, D, E, F, G, A, B. Fingerings are indicated as 5, S, 1, R L R, 5, S, S, 5, R L R, 1, S, 5.

Concert E (G \flat) Scale

Musical notation for the Concert E (G \flat) Scale. The scale is written on a treble clef staff. The notes are G \flat , A, B, C, D, E, F, G \flat . Fingerings are indicated as L R, S, S, R L R, S, 5, 5, S, R L R, S, S, R L. Key signatures are marked as + E \flat key and - E \flat key. Notes are marked as use chromatic fingering.

Concert B (D \flat) Scale

Musical notation for the Concert B (D \flat) Scale. The scale is written on a treble clef staff. The notes are D \flat , E, F, G, A, B, C, D \flat . Fingerings are indicated as S, S, R, L, S, 5, 5, S, L, R, S. Key signatures are marked as + E \flat key and - E \flat key. Notes are marked as use chromatic fingering.

Concert G \flat (A \flat) Scale

Musical notation for the Concert G \flat (A \flat) Scale. The scale is written on a treble clef staff. The notes are A \flat , B, C, D, E, F, G, A \flat . Fingerings are indicated as S, R L, L R, S.

Oboe

Twelve Major Scales

Concert B \flat Scale



Concert E \flat Scale



Concert A \flat Scale



Concert D \flat Scale



Concert F Scale



Concert C Scale



Concert G Scale



Concert D Scale



Concert A Scale



Concert E Scale



Concert E Scale



Concert G \flat Scale



Bassoon

Twelve Major Scales

Concert B \flat Scale

Musical notation for the Concert B \flat Scale in bass clef. The scale is written in two lines, showing the ascending and descending sequences of notes.

Concert E \flat Scale

Musical notation for the Concert E \flat Scale in bass clef. The scale is written in two lines, showing the ascending and descending sequences of notes.

Concert A \flat Scale

Musical notation for the Concert A \flat Scale in bass clef. The scale is written in two lines, showing the ascending and descending sequences of notes.

Concert D \flat Scale

Musical notation for the Concert D \flat Scale in bass clef. The scale is written in two lines, showing the ascending and descending sequences of notes.

Concert F Scale

Musical notation for the Concert F Scale in bass clef. The scale is written in two lines, showing the ascending and descending sequences of notes.

Concert C Scale

Musical notation for the Concert C Scale in bass clef. The scale is written in two lines, showing the ascending and descending sequences of notes.

Concert G Scale

Musical notation for the Concert G Scale in bass clef. The scale is written in two lines, showing the ascending and descending sequences of notes.

Concert D Scale

Musical notation for the Concert D Scale in bass clef. The scale is written in two lines, showing the ascending and descending sequences of notes.

Concert A Scale

Musical notation for the Concert A Scale in bass clef. The scale is written in two lines, showing the ascending and descending sequences of notes.

Concert E Scale

Musical notation for the Concert E Scale in bass clef. The scale is written in two lines, showing the ascending and descending sequences of notes.

Concert B Scale

Musical notation for the Concert B Scale in bass clef. The scale is written in two lines, showing the ascending and descending sequences of notes.

Concert G \flat Scale

Musical notation for the Concert G \flat Scale in bass clef. The scale is written in two lines, showing the ascending and descending sequences of notes.

Alto Saxophone
Baritone Saxophone

Twelve Major Scales

Concert B \flat (G) Scale



Concert E \flat (C) Scale



Concert A \flat (F) Scale



Concert D \flat (B \flat) Scale



Concert F (D) Scale



Concert C (A) Scale



Concert G (E) Scale



Concert D (B) Scale



Concert A (G \flat) Scale



Concert E (D \flat) Scale



Concert B (A \flat) Scale



Concert G \flat (E \flat) Scale



Tenor Saxophone

Twelve Major Scales

Concert B \flat (C) Scale

Musical notation for the Concert B-flat (C) Scale. The scale is written on a single staff in treble clef, starting on middle C. The notes are: C4, D4, E4, F4, G4, A4, B4, C5, B4, A4, G4, F4, E4, D4, C4. The piece concludes with a whole rest on the final C4.

Concert E \flat (F) Scale

Musical notation for the Concert E-flat (F) Scale. The scale is written on a single staff in treble clef, starting on F4. The notes are: F4, G4, A4, B4, C5, B4, A4, G4, F4, E4, D4, C4, B3, A3, G3, F4. The piece concludes with a whole rest on the final F4.

Concert A \flat (B \flat) Scale

Musical notation for the Concert A-flat (B-flat) Scale. The scale is written on a single staff in treble clef, starting on B-flat4. The notes are: B \flat 4, C5, D5, E5, F5, G5, A5, B \flat 5, A5, G5, F5, E5, D5, C5, B \flat 4. The piece concludes with a whole rest on the final B-flat4.

Concert D \flat (E \flat) Scale

Musical notation for the Concert D-flat (E-flat) Scale. The scale is written on a single staff in treble clef, starting on E-flat4. The notes are: E \flat 4, F4, G4, A4, B4, C5, B4, A4, G4, F4, E \flat 4, D \flat 4, C \flat 4, B \flat 3, A \flat 3, G \flat 3, E \flat 4. The piece concludes with a whole rest on the final E-flat4.

Concert F (G) Scale

Musical notation for the Concert F (G) Scale. The scale is written on a single staff in treble clef, starting on G4. The notes are: G4, A4, B4, C5, B4, A4, G4, F4, E4, D4, C4, B3, A3, G4. The piece concludes with a whole rest on the final G4.

Concert C (D) Scale

Musical notation for the Concert C (D) Scale. The scale is written on a single staff in treble clef, starting on D4. The notes are: D4, E4, F4, G4, A4, B4, C5, B4, A4, G4, F4, E4, D4, C4, B3, A3, D4. The piece concludes with a whole rest on the final D4.

Concert G (A) Scale

Musical notation for the Concert G (A) Scale. The scale is written on a single staff in treble clef, starting on A4. The notes are: A4, B4, C5, B4, A4, G4, F4, E4, D4, C4, B3, A3, G4. The piece concludes with a whole rest on the final A4.

Concert D (E) Scale

Musical notation for the Concert D (E) Scale. The scale is written on a single staff in treble clef, starting on E4. The notes are: E4, F4, G4, A4, B4, C5, B4, A4, G4, F4, E4, D4, C4, B3, A3, D4. The piece concludes with a whole rest on the final E4.

Concert A (B) Scale

Musical notation for the Concert A (B) Scale. The scale is written on a single staff in treble clef, starting on A4. The notes are: A4, B4, C5, B4, A4, G4, F4, E4, D4, C4, B3, A3, G4. The piece concludes with a whole rest on the final A4.

Concert E (G \flat) Scale

Musical notation for the Concert E (G-flat) Scale. The scale is written on a single staff in treble clef, starting on E4. The notes are: E4, F4, G \flat 4, A4, B4, C5, B4, A4, G4, F4, E4, D4, C4, B3, A3, E4. The piece concludes with a whole rest on the final E4.

Concert B (D \flat) Scale

Musical notation for the Concert B (D-flat) Scale. The scale is written on a single staff in treble clef, starting on B4. The notes are: B4, C5, D \flat 5, E5, F5, G5, A5, B4, A4, G4, F4, E4, D4, C4, B4. The piece concludes with a whole rest on the final B4.

Concert G \flat (A \flat) Scale

Musical notation for the Concert G-flat (A-flat) Scale. The scale is written on a single staff in treble clef, starting on G-flat4. The notes are: G \flat 4, A \flat 4, B \flat 4, C5, B \flat 4, A \flat 4, G \flat 4, F4, E4, D4, C4, B3, A \flat 3, G \flat 4. The piece concludes with a whole rest on the final G-flat4.

Horn

Twelve Major Scales

Concert B \flat (F) Scale

Musical notation for the Concert B-flat (F) Scale. The scale is written on a single staff in treble clef with a key signature of one flat (B-flat). It consists of 12 notes: B-flat, C, D, E-flat, F, G, A, B-flat, C, D, E-flat, F. The notes are grouped into ascending and descending pairs, with a final whole note on the starting note.

Concert E \flat (B \flat) Scale

Musical notation for the Concert E-flat (B-flat) Scale. The scale is written on a single staff in treble clef with a key signature of two flats (B-flat, E-flat). It consists of 12 notes: B-flat, C, D, E-flat, F, G, A, B-flat, C, D, E-flat, F. The notes are grouped into ascending and descending pairs, with a final whole note on the starting note.

Concert A \flat (E \flat) Scale

Musical notation for the Concert A-flat (E-flat) Scale. The scale is written on a single staff in treble clef with a key signature of three flats (B-flat, E-flat, A-flat). It consists of 12 notes: B-flat, C, D, E-flat, F, G, A, B-flat, C, D, E-flat, F. The notes are grouped into ascending and descending pairs, with a final whole note on the starting note.

Concert D \flat (A \flat) Scale

Musical notation for the Concert D-flat (A-flat) Scale. The scale is written on a single staff in treble clef with a key signature of four flats (B-flat, E-flat, A-flat, D-flat). It consists of 12 notes: B-flat, C, D, E-flat, F, G, A, B-flat, C, D, E-flat, F. The notes are grouped into ascending and descending pairs, with a final whole note on the starting note.

Concert F (C) Scale

Musical notation for the Concert F (C) Scale. The scale is written on a single staff in treble clef with a key signature of one flat (B-flat). It consists of 12 notes: B-flat, C, D, E-flat, F, G, A, B-flat, C, D, E-flat, F. The notes are grouped into ascending and descending pairs, with a final whole note on the starting note.

Concert C (G) Scale

Musical notation for the Concert C (G) Scale. The scale is written on a single staff in treble clef with a key signature of one sharp (F-sharp). It consists of 12 notes: B-flat, C, D, E-flat, F, G, A, B-flat, C, D, E-flat, F. The notes are grouped into ascending and descending pairs, with a final whole note on the starting note.

Concert G (D) Scale

Musical notation for the Concert G (D) Scale. The scale is written on a single staff in treble clef with a key signature of two sharps (F-sharp, C-sharp). It consists of 12 notes: B-flat, C, D, E-flat, F, G, A, B-flat, C, D, E-flat, F. The notes are grouped into ascending and descending pairs, with a final whole note on the starting note.

Concert D (A) Scale

Musical notation for the Concert D (A) Scale. The scale is written on a single staff in treble clef with a key signature of three sharps (F-sharp, C-sharp, G-sharp). It consists of 12 notes: B-flat, C, D, E-flat, F, G, A, B-flat, C, D, E-flat, F. The notes are grouped into ascending and descending pairs, with a final whole note on the starting note.

Concert A (E) Scale

Musical notation for the Concert A (E) Scale. The scale is written on a single staff in treble clef with a key signature of four sharps (F-sharp, C-sharp, G-sharp, D-sharp). It consists of 12 notes: B-flat, C, D, E-flat, F, G, A, B-flat, C, D, E-flat, F. The notes are grouped into ascending and descending pairs, with a final whole note on the starting note.

Concert E (B) Scale

Musical notation for the Concert E (B) Scale. The scale is written on a single staff in treble clef with a key signature of five sharps (F-sharp, C-sharp, G-sharp, D-sharp, A-sharp). It consists of 12 notes: B-flat, C, D, E-flat, F, G, A, B-flat, C, D, E-flat, F. The notes are grouped into ascending and descending pairs, with a final whole note on the starting note.

Concert B (G \flat) Scale

Musical notation for the Concert B (G-flat) Scale. The scale is written on a single staff in treble clef with a key signature of five flats (B-flat, E-flat, A-flat, D-flat, G-flat). It consists of 12 notes: B-flat, C, D, E-flat, F, G, A, B-flat, C, D, E-flat, F. The notes are grouped into ascending and descending pairs, with a final whole note on the starting note.

Concert G \flat (D \flat) Scale

Musical notation for the Concert G-flat (D-flat) Scale. The scale is written on a single staff in treble clef with a key signature of six flats (B-flat, E-flat, A-flat, D-flat, G-flat, C-flat). It consists of 12 notes: B-flat, C, D, E-flat, F, G, A, B-flat, C, D, E-flat, F. The notes are grouped into ascending and descending pairs, with a final whole note on the starting note.

Trombone
Euphonium

Twelve Major Scales

Concert B \flat Scale



Concert E \flat Scale



Concert A \flat Scale



Concert D \flat Scale



Concert F Scale



Concert C Scale



Concert G Scale



Concert D Scale



Concert A Scale



Concert E Scale



Concert B Scale



Concert G \flat Scale



Tuba

Twelve Major Scales

Concert B \flat Scale



Concert E \flat Scale



Concert A \flat Scale



Concert D \flat Scale



Concert F Scale



Concert C Scale



Concert G Scale



Concert D Scale



Concert A Scale



Concert E Scale



Concert B Scale



Concert G \flat Scale



Mallet

Twelve Major Scales

Concert B \flat Scale



Concert E \flat Scale



Concert A \flat Scale



Concert D \flat Scale



Concert F Scale



Concert C Scale



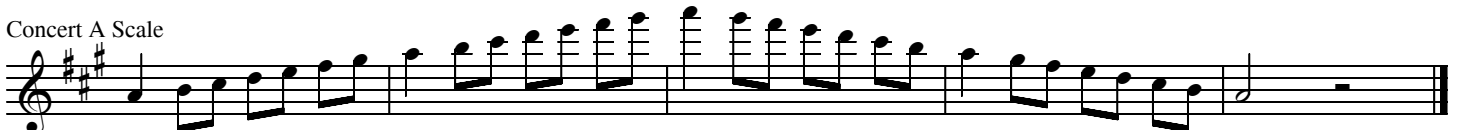
Concert G Scale



Concert D Scale



Concert A Scale



Concert E Scale



Concert D Scale



Concert G \flat Scale

